

FOR LEASE > CLASS A OFFICE/WAREHOUSE

Polvorosa Business Park



2265 POLVOROSA AVENUE & 1555 DOOLITTLE DRIVE | SAN LEANDRO, CA



Polvorosa Business Park is designed for office, sales & service, R&D and light industrial tenants. Its unparalleled amenities and beautifully landscaped setting provide a professional environment for today's business. Located in San Leandro with immediate access to Interstate 880 and the Oakland International Airport, Polvorosa Business Park provides a direct link to key commercial and industrial centers throughout the entire Bay Area. It is less than 30 minutes to either San Francisco, San Jose, or the Tri-Valley.

Contact Us

JOE YAMIN

+1 510 433 5812

joe.yamin@colliers.com

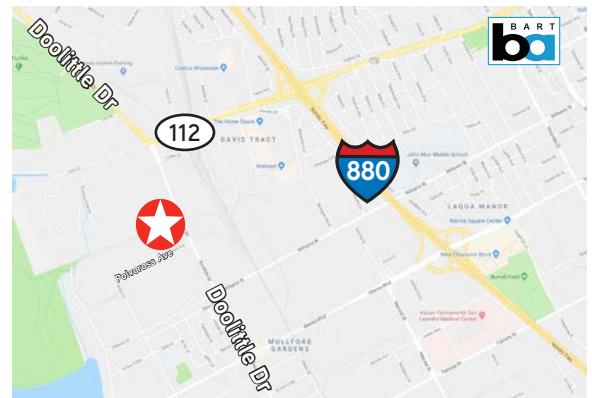
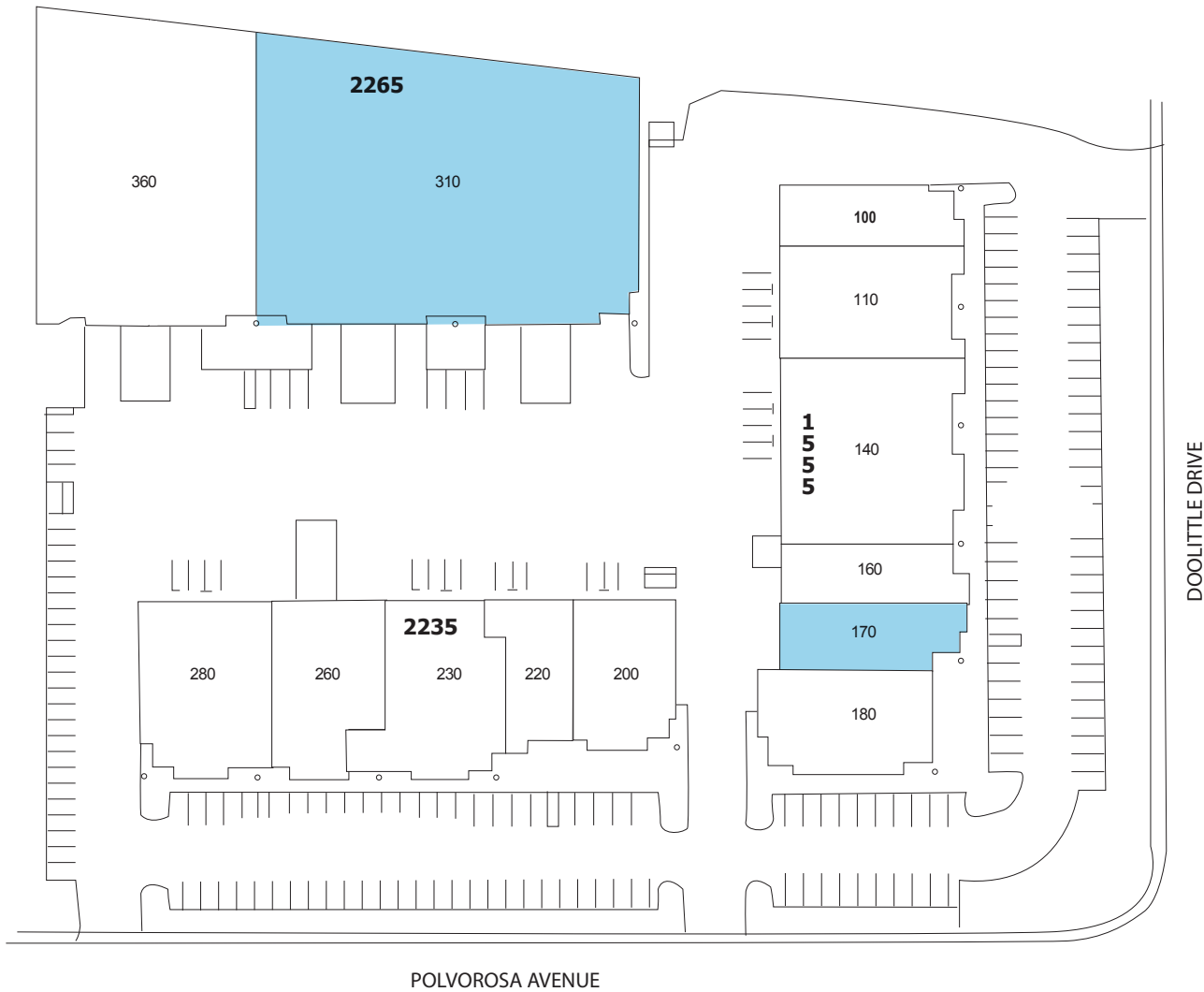
CA License No. 01327666



FOR LEASE > CLASS A OFFICE/WAREHOUSE

Polvorosa Business Park

2265 POLVOROSA AVENUE & 1555 DOOLITTLE DRIVE | SAN LEANDRO, CA



Copyright © 2019 Colliers International. Information herein has been obtained from sources deemed reliable, however its accuracy cannot be guaranteed. The user is required to conduct their own due diligence and verification.

JOE YAMIN
+1 510 433 5812
joe.yamin@colliers.com
CA License No. 01327666

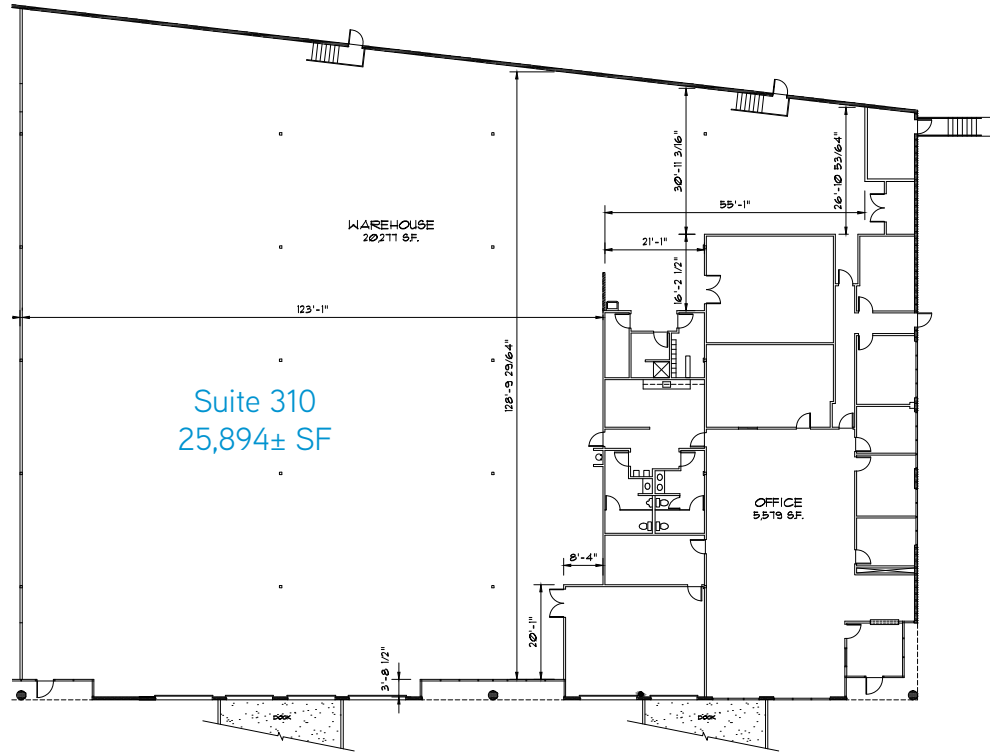


3825 Hopyard Road, Suite 195
Pleasanton, CA 94588
+1 925 463 2300
www.colliers.com/pleasanton

FOR LEASE > CLASS A OFFICE/WAREHOUSE

Polvorosa Business Park

2265 POLVOROSA AVENUE | SAN LEANDRO, CA



Suite 310

- > Total: 25,894 SF
- > Warehouse: 20,277 SF
- > Office: 5,579 SF
- > Loading: 3 loading docks & 3 grade level doors
- > Clear Height: 22'-26'
- > Heavy Power: 800 amps @ 480v 3 phase

Rent: \$0.85/SF/month NNN

(Expenses are currently estimated at \$0.25/SF/month)

Copyright © 2019 Colliers International. Information herein has been obtained from sources deemed reliable, however its accuracy cannot be guaranteed. The user is required to conduct their own due diligence and verification.

JOE YAMIN
+1 510 433 5812
joe.yamin@colliers.com
CA License No. 01327666

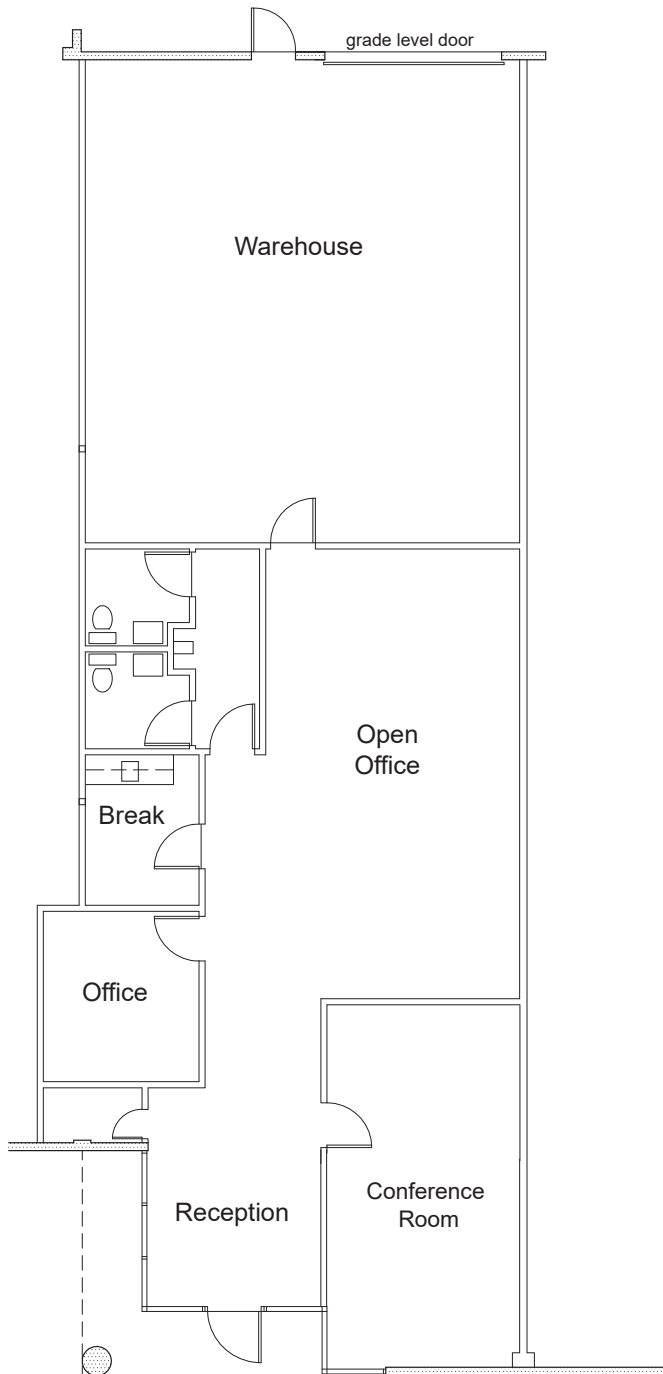


3825 Hopyard Road, Suite 195
Pleasanton, CA 94588
+1 925 463 2300
www.colliers.com/pleasanton

FOR LEASE > CLASS A OFFICE/WAREHOUSE

Polvorosa Business Park

1555 DOOLITTLE DRIVE | SAN LEANDRO, CA



Suite 170

- > Total: 2,762 SF
- > Warehouse: ±1,000 SF
- > Office: ±1,700 SF
- > Loading: 1 grade level door
- > Frontage on Doolittle Drive

Rent: \$1.35/SF/month NNN

(Expenses are currently estimated at \$0.358/SF/month)

Copyright © 2019 Colliers International. Information herein has been obtained from sources deemed reliable, however its accuracy cannot be guaranteed. The user is required to conduct their own due diligence and verification.

JOE YAMIN
+1 510 433 5812
joe.yamin@colliers.com
CA License No. 01327666



3825 Hopyard Road, Suite 195
Pleasanton, CA 94588
+1 925 463 2300
www.colliers.com/pleasanton